



Forest
Landscape
Restoration
Program



**Amhara Design and Supervision
Works Enterprise/ADSWE**



Identification/Mapping and Development Bylaws of Areas Enclosures in South Gondar and Adama Cluster

Synopsis of the Achieved Results Status at end December 2020



General Objective

The general objective of the activity is identification, mapping and development of areas enclosures in South Gonder and Adama Cluster. These areas are part of the focus areas for the FLR Program.

Specific Objectives

The activity has the following specific objectives:

- Identification of area enclosures.
- Delineation/mapping of the identified areas.
- Propose appropriate land use interventions.
- Develop and approve bylaws in the identified/mapped areas.

Scope of the activity

The activity covers most of the Kebeles in the following Woredas:

- **South Gonder:** Ebinat, Farta, Libo Kemkem, Meketwa and Guna Begameder Woredas.
- **Adama Cluster:** Bibugn, Quarit, Sekela, Yilmena Densa, South Mecha and Sinan Woredas.

Applied methodology

The methods applied are a direct field visit, field data collection and discussion with the concerned stakeholders, notably the people and the farmers who concerned/affected by the identified area enclosures. The working procedures were classified in three phases:

- Pre-field works: This stage includes data collection formats and base map preparation.
- Field works: This stage includes communication with concerned bodies and stakeholders, identification procedures, local and community discussions and approval, ground truth and GPS coordinates delineation and mapping of the sites.
- Post-field works: Evaluation of the field work and map development.
- Development and approval of bylaws. Public meetings where all local farmers are invited are part of this process.

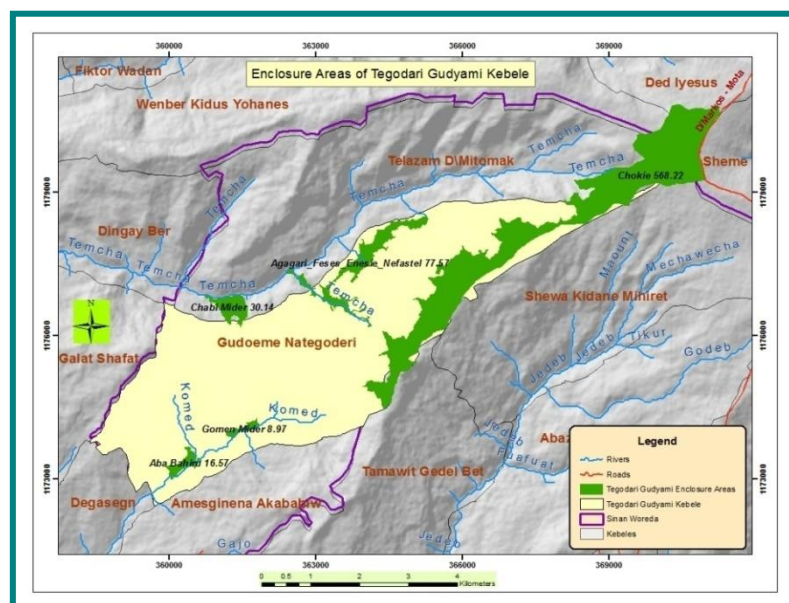
Achieved Results

- Totally, **10 Woredas** and **448 Kebeles** included, more than **122000 ha** of areas enclosures identified and mapped.
- About **497 bylaws** covering an area of more than **73000 ha** in **178 Kebeles** are developed and approved by the local communities.

The following table synthesizes the achieved results:

Identification and Mapping of Area Enclosures				Bylaws Developed and Approved		
Region	Woreda	No. Kebeles Involved	Identified and Mapped Area [ha]	No. Concerned Kebeles	No. Bylaws	Covered Area[ha]
South Gonder	• Ebinat and Meketawa [Ex-Ebinat]	37	45507	36	82	25218
	• Libokemkem	14	6608	11	18	4890
	• Farta and Guna Begemder [Ex- Farta]	47	12353	21	12	2152
Adama Cluster	• Quarit	29	8934	21	68	4291
	• Sekela	147	14676	30	99	13456
	• Yilmana Densa	33	10190	20	31	6083
	• South Mecha	14	6265	11	86	5136
	• Sinan	112	10397	14	60	8287
	• Bibugn	15	8011	14	41	3833
Total	10	448	122941	178	497	73346

Sample of mapping of the identified area enclosures



Discussions/Consultations with the concerned people/communities regarding the approval of the identified enclosures areas

More than 42000 community members were participated in the discussions and consultations. Every identified area enclosure is delineated and mapped with agreement of the community. Minutes of each discussion/consultation session were taken. The concerned stakeholders gave their consents to establish area enclosures in most of the identified/mapped sites. However, the participants [*most of them are farmers*] raised diverse ideas and proposals regarding interventions to be implemented in the identified areas. The ideas and proposals vary from place to place, depending on the environmental/agro-ecology context and local socioeconomic needs. Therefore, final approvals are discussed and endorsed, case by case, during the process of bylaws development.

Bylaws Development

The development of the bylaws of the identified/mapped area enclosures is the ultimate and conclusive objective of the activity.

The activity concerned 178 kebeles located in 10 Woredas [*South Gonder and Adama Cluster*]. About **497 bylaws** covering an area of more than **73000 ha** are developed and approved by the local communities.

The bylaws are developed in accordance with the standard methodology for developing bylaws and the proclamation developed by the regional government. The bylaw template developed in Wello in the frame work of IFSD Program is used as a reference/sample.

The Bylaws are approved by all the concerned stakeholders, at different levels, i.e.:

- Local people/community.
 - Watershed Committee.
 - Kebele Administration and office of land use.
 - Woreda Office of Agriculture.
-